

# Rudra

the chef's choice

Rudra Exim Ltd

Wholesale  
DISTRIBUTORS



 [rudrauk.co.uk](http://rudrauk.co.uk)





**Rudra Exim Ltd**

## **About Us**

Rudra Exim, the chefs choice is a one stop solution for all hospitality requirements. Started a decade ago, Rudra Exim has been supplying the United Kingdom and beyond with high quality Asian groceries, food packaging products and hospitality cleaning supplies. Quality, price and customer needs are our priority.

With over 500 products from 80 different suppliers Rudra Exim specialises in supplying our loyal customers across the UK from Eastham London to Aberdeen in Scotland. Our wholesale department extends its arms across the channel into France, Switzerland and Germany. We source high quality products from different parts of the world to suit your culinary requirements. Our state of the art warehouse located at Basildon, UK is over 4,000 square feet and fully equipped with machineries and logistical solutions to meet all customers' requirements. We pick, pack and deliver orders of all sizes to meet the customer's catering deadlines. Rudra Exim also specialises in supplying groceries to leading retail stores, cash and carry across UK.

**Wholesale**  
**DISTRIBUTORS**



# Wholesale DISTRIBUTORS

1	Chillies	2
2	Cleaners	2
3	Desserts	3
4	Drinks	3
5	Dry Fruits & Nuts	4
6	Flours	4
7	Lentils	5
8	MDH & Pataks	5
9	Miscellaneous	6
10	Noodles & Assorted	6
11	Oil	7
12	Pickles & Papads	7
13	Powders	8
14	Rices	8
15	Sakthi & Baba	9
16	Sauces	9
17	Seasoning	10
18	Seeds	10
19	Take Away	11
20	Tin Foods	11



## Chillies

- 1 BIRD EYE CHILLI 1KG
- 2 CHILLI POWDER 5KG (3)
- 3 CHILLI POWDER 5KG (TRS)
- 4 CHILLI POWDER EX HOT 5KG (3)
- 5 CHILLI POWDER EX HOT 5KG (TRS)
- 6 CRUSHED CHILLIES 25KG
- 7 CRUSHED CHILLIES 4KG (HEERA) (3)
- 8 CRUSHED CHILLIES 5KG
- 9 DRY CHILLI LONG 1KG (STEMLESS)
- 10 KASHMIRI CHILLI POWDER 1KG (6)
- 11 KASHMIRI CHILLI WHOLE 200G (HEERA) (6)
- 12 KINGS CURRY POWDER 3KG
- 13 KINGS CURRY POWDER 500G (30)
- 14 KINGS CURRY POWDER 900G (24)
- 15 RUDRA CURRY POWDER 3KG
- 16 SURYA CURRY POWDER EXTRA HOT 900G (25)
- 17 SURYA CURRY POWDER HOT 3KG
- 18 SURYA CURRY POWDER HOT 500G (25)



## Cleaners

- 1 BLACK COMPACTOR SACKS (22\*33.5\*47) (100)
- 2 BLACK REFUSE SACK (18\*29\*38) (200)
- 3 BLEACH 4X5LTR
- 4 BLEACH IND THICK 5LTR (VALLEY)
- 5 BLUE ROLL EMBOSSED C9 (2PLY) (6) (90M)
- 6 BLUE ROLL EMBOSSED CF26 (2PLY) (6) (150M)
- 7 CAUSTIC SODA 25KG
- 8 CAUSTIC SODA 6X1KG
- 9 DEEPIO POWDER 6KG
- 10 DEEPIO SPRAY 6X750ML
- 11 DISPOSABLE APRONS WHITE 100S
- 12 FLASH APC LIQUID LEMON 5LTR (2)
- 13 GLOVES VINYL CLEAR EXTRA LRG (100)
- 14 GLOVES VINYL CLEAR LRG (100)
- 15 GLOVES VINYL CLEAR MED (100)
- 16 GLOVES YELLOW MED (MARIGOLD)
- 17 GLOVES YELLOW RUBBER LARGE 10S
- 18 GLOVES YELLOW RUBBER MED 10S
- 19 HAND SOAP 5LTR (PINK PEARL)
- 20 MICRO FIBRE TOWELS 36 PACK
- 21 MR MUSCLE 6X750ML
- 22 PINE DISINFECTANT 5LTR (4)
- 23 SANITIZER SPRAY 12X750ML (ASTONISH)
- 24 SCOURERS GALVANISED STEEL 38G (10)
- 25 SCOURERS SPONGE (10)
- 26 SCOURERS SPONGE 6\*4 (6)
- 27 SCOURING PADS 6\*9 JUMBO GREEN JJ020
- 28 TOILET ROLLS 2 PLY 40S (NICKY)
- 29 WASHING POWDER 100W 6.5KG (DAZ)
- 30 WASHING UP LIQUID 4\*5LTR
- 31 WASHING UP LIQUID 5LTR (VALLEY)



# Desserts

- 1 BETLE NUT DRY SLICED 50\*100G (JAY)
- 2 COFFEE FILTER 6\*1.362KG (COLOMBIAN)
- 3 COFFEE NARASUS FILTER 100G
- 4 COFFEE NARASUS FILTER 200G (100)
- 5 COFFEE NARASUS FILTER 500G (40)
- 6 COFFEE NESCAFE ORIGINAL 1KG
- 7 CONDENSED MILK 397G (NESTLE)
- 8 CONDENSED MILK 12X397G (TROPICAL SUN)
- 9 DATES PITTED 10KG
- 10 DRINKING CHOCOLATE 1KG (CADBURYS)
- 11 HONEY 6X340G (ROWSE)
- 12 JACK FRUIT 24\*580ML (JAY)
- 13 JAGGERY CRUSHED WHITE 25X400G
- 14 JAGGERY CRUSHED WHITE 350G (25)
- 15 JAGGERY CUBES BLACK 400G (30)
- 16 JAGGERY CUBES WHITE 350G (25) (SHANKAR)
- 17 JAGGERY CUBES WHITE 400G (25) (JAY)
- 18 JAGGERY CUBES WHITE 400G (25) (KRISHNA)
- 19 JAGGERY KITHUL 400G (VEENU) (40)
- 20 JAGGERY KITHUL 500G (32)
- 21 JELLY STRAWBERRY 12X80G (AHMED) (12)
- 22 JELLY STRAWBERRY 6X70G (AHMED) (24)
- 23 LOLLIPOP WHEEL 200S (CHUPA CHUPS)
- 24 MANGO PULP KESAR 6X850G (NATCO)
- 25 MANGO SLICE 12X425G (NATCO)
- 26 MILK POWDER 25KG
- 27 PAN MASALA MUKHWAS 800G
- 28 ROSE SYRUP 12X725ML
- 29 ROSE SYRUP 12X750ML (T.G.KIAT)
- 30 SUGAR 15X1KG (T & L)
- 31 SUGAR 25KG (BRITISH)
- 32 SUGAR 25KG (T & L)
- 33 SUGAR BROWN 3KG (4)
- 34 SWEET FENNEL MINT 1KG
- 35 SWEET FENNEL MIXED COLOUR 1KG
- 36 SWEETENER SPOONFUL JAR 6\*40G (CANDEREL)
- 37 TEA LOOSE 900G (KASTURI) (12)
- 38 TEA LOOSE 900G (LIPTON YELLOW LABEL) (12)
- 39 TEA PACKETS 1100 (PG TIPS)
- 40 TIP TOP MUKHWAS 800G



# Drinks

- 1 7 UP CANS 24\*330ML
- 2 BOOST ENERGY 24\*250ML (ORIGINAL)
- 3 BOOST ENERGY 24\*250ML (SUGAR FREE)
- 4 COKE CANS (GB) 24\*330ML
- 5 COKE CANS 24\*330ML
- 6 COKE GLASS BTLS 24\*330ML
- 7 COKE ZERO GLASS BTLS 24\*330ML
- 8 CREAM SODA CANS 325ML (24)
- 9 DIET COKE CANS 24\*330ML
- 10 DIET COKE GLASS BTLS 24\*330ML
- 11 FANTA CANS 24\*330ML
- 12 FANTA GLASS BTLS 24\*330ML
- 13 GINGER BEER CANS 24\*330ML (OJ)
- 14 GINGER BEER CANS 325ML (24)
- 15 NECTO CANS 325ML (24)
- 16 ORANGE BARLEY CANS 325ML (24)
- 17 PEPSI CANS 24\*330ML
- 18 SPRITE ZERO GLASS BTLS 24\*330ML
- 19 WATER 24\*50CL (EVIAN)
- 20 WATER 6\*1.5LTR (EVIAN)
- 21 WATER 8\*1.5LTR (EVIAN)
- 22 WATER STILL 12\*500ML (ELM)



## Dry Fruits & Nuts

- 1 ALMOND FLAKES 1KG (6)
- 2 ALMOND POWDER 10KG
- 3 ALMOND POWDER 1KG
- 4 ALMOND WHOLE 1KG
- 5 CASHEW WHOLE 50LB
- 6 CASHEW LP 1KG
- 7 CASHEW LP 50LB
- 8 CASHEW SPLITS WHOLE 48LB (21.77KG)
- 9 CASHEW WHOLE 1KG
- 10 COCONUT FLOUR 1KG
- 11 COCONUT FLOUR 20KG
- 12 COCONUT MILK POWDER 12X1KG (MAGGI)
- 13 COCONUT MILK POWDER 1KG (MAGGI)
- 14 COCONUT MILK POWDER 1KG (SHANKAR)
- 15 CREAMED COCONUT 40X198G (PRIDE)
- 16 CREAMED COCONUT 40X200G (KTC)
- 17 DESICCATED COCONUT 5KG
- 18 DESICCATED COCONUT FINE 25KG
- 19 DESICCATED COCONUT MEDIUM 25KG
- 20 PEANUTS PINK 1KG
- 21 PEANUTS RED 1KG
- 22 PEANUTS RED 25KG
- 23 PISTA KERNELS 750G (TRS)
- 24 RAISINS GOLD 1KG (12.5)

## Flours

- 1 ATTA 10KG (AASIRWAAD)
- 2 ATTA 10KG (HEERA)
- 3 ATTA 10KG (PILSBURY)
- 4 ATTA 1KG (AASIRWAAD)
- 5 ATTA 2KG (AASIRWAAD)
- 6 ATTA 5KG (AASIRWAAD) (4)
- 7 ATTA MEDIUM 25KG (ELEPHANT)
- 8 ATTA MULTI GRAIN 5KG (AASIRWAAD) (4)
- 9 ATTA SELECT (AASIRWAAD) 5KG (4)
- 10 BREAD CRUMBS GOLDEN 25KG
- 11 BREAD CRUMBS WHITE 3KG (3)
- 12 CORN FLOUR 4X3KG
- 13 GRAM FLOUR 6X2KG (KTC)
- 14 GRAM FLOUR 6X2KG (TRS)
- 15 MAIDA 10KG
- 16 MAIDA 10KG (NAGA)
- 17 MAIDA 20\*1KG (NIRU)
- 18 PLAIN FLOUR 25KG (HEERA)
- 19 PLAIN FLOUR SOVEREIGN 16KG (ADM)
- 20 RAGI FLOUR 1KG (KURAKKAN) (20)
- 21 RED RAW RICE D/P 4\*5KG (VEENU)
- 22 RED RAW RICE D/P 5KG (RUDRA)
- 23 RICE FLOUR 5KG (3) (TRS)
- 24 RICE FLOUR FINE 25KG
- 25 ROASTED MUNG FLOUR 450G (NIRU) (30)
- 26 ROASTED RED RICE FLOUR 3.6KG (NIRU) (6)
- 27 ROASTED RED RICE FLOUR 5KG (RUDRA)
- 28 ROASTED RED RICE FLOUR 5KG (THIRUMAGAL) (4)
- 29 ROASTED URID FLOUR 450G (NIRU) (30)
- 30 ROASTED WHITE RICE FLOUR 3.6KG (NIRU) (5)
- 31 ROASTED WHITE RICE FLOUR 5KG (RUDRA)
- 32 SAMBA WHEAT BROKEN 1KG (KERALA KT) (10)
- 33 SELF RAISING ATTA 25KG (ELEPHANT)
- 34 SELF RAISING ATTA 25KG (HEERA)
- 35 SELF RAISING FLOUR 10\*1.1KG (MC DOUG)
- 36 STEAMED WHEAT FLOUR 3.6KG (NIRU) (6)
- 37 STEAMED WHEAT FLOUR 4KG (VEENU) (5)
- 38 STEAMED WHEAT FLOUR 5KG (RUDRA)
- 39 STEAMED WHEAT FLOUR 5KG (SURYA) (4)
- 40 STEAMED WHEAT FLOUR 5KG (SHANKAR) (4)
- 41 URID PAPAD FLOUR 1KG (TRS) (10)



# Lentils

- 1 BLACK EYE BEANS 1KG
- 2 BROWN LENTILS WHOLE 1KG (TRS)
- 3 CHANA DAL 1KG
- 4 CHANA DAL 25KG
- 5 CHICK PEAS 1KG
- 6 CHICK PEAS 25KG
- 7 DARIA DAL ROASTED 1KG
- 8 DARIA DAL ROASTED 5KG
- 9 GREEN MUNG 1KG
- 10 GREEN MUNG 25KG
- 11 GREEN PEAS 25KG
- 12 KALA CHANA 1KG
- 13 KALA CHANA 25KG
- 14 MASOOR DAL 1KG
- 15 MASOOR DAL 25KG
- 16 MUNG DAL 1KG
- 17 MUNG DAL 25KG
- 18 RED KIDNEY BEANS 1KG
- 19 RED KIDNEY BEANS 25KG
- 20 ROASTED MUNG DAL 25\*400G (JAY)
- 21 TOOR DAL OILY 1KG
- 22 TOOR DAL OILY 25KG
- 23 TOOR DAL PLAIN 1KG
- 24 TOOR DAL PLAIN 25KG
- 25 URID GOTA 1KG
- 26 URID GOTA 1KG (IND)
- 27 URID GOTA 20KG (INDIAN)
- 28 URID GOTA 25KG
- 29 URID GOTA 25KG (IND)
- 30 URID SPLIT 25KG
- 31 URID SPLIT 5KG
- 32 URID WHOLE BLACK 1KG
- 33 WHITE KIDNEY BEANS 1KG
- 34 WHITE KIDNEY BEANS 25KG



# MDH & Pataks

- 1 BAINGAN BHARTAA 10X100G (MDH)
- 2 BHUNA SPICE PASTE 6\*283G (PATAKS)
- 3 BOMBAY BIRYANI MASALA 10X100G (MDH)
- 4 CHANA MASALA 10\*100G (MDH)
- 5 CHAT MASALA 10\*100G (MDH)
- 6 CHAT MASALA 500G (MDH) (4)
- 7 CHICKEN CURRY MASALA 10X100G (MDH)
- 8 DEGGI MIRCHI 10X100G (MDH)
- 9 DEGGI MIRCHI 500G (MDH) (4)
- 10 GARAM MASALA 500G (MDH) (4)
- 11 HYDERABADI BIRYANI 10X50G (MDH)
- 12 KARAHAI CHICKEN 10X100G (MDH)
- 13 KARAHAI GOSHT 10X100G (MDH)
- 14 KASHMIRI MASALA PASTE 2.2KG (PATAKS) (2)
- 15 KASOORI METHI 1KG (MDH)
- 16 KITCHEN KING MASALA 10X100G (MDH)
- 17 PAV BHAJI 10X100G (MDH)
- 18 ROGAN JOSH PASTE 6\*283G (PATAKS)
- 19 TANDOORI BBQ MASALA 10X100G (MDH)
- 20 TANDOORI SPICE MARINADE 6\*312G (PATAKS)
- 21 TIKKA MASALA CURRY PASTE 2.495KG (PATAKS) (2)



## Miscellaneous



- 1 BAKING POWDER 12\*100G (BORWICKS)
- 2 BICARBONATE OF SODA 12\*100G (BORWICKS)
- 3 BIRYANI MASALA 12X50G (SHAN)
- 4 BOMBAY BIRYANI 12X60G (SHAN)
- 5 CORN POHA 15KG
- 6 FOOD COLOUR BRIGHT RED 500G (PREEMA)
- 7 FOOD COLOUR DEEP ORANGE 500G (TRS)
- 8 FOOD COLOUR EGG YELLOW 500G (PREEMA)
- 9 FOOD COLOUR EGG YELLOW 500G (TRS)
- 10 FOOD COLOUR GREEN 500G (TRS)
- 11 FOOD COLOUR RED 500G (TRS)
- 12 FRESH COCONUT BAG 25\*500G
- 13 JAVENTRY - MACE 400G (6)
- 14 JAVENTRY - MACE 50G (10)
- 15 KEWRA WATER 12X190ML
- 16 LION LAGER 625ML (12)
- 17 LION STOUT 625ML (12)
- 18 MISCELLANEOUS VEGETABLES
- 19 ROSE WATER 12\*450ML
- 20 SAFFRON 12X1G (SPANISH)
- 21 SPRING ROLL PASTRY SHEETS 8\*40\*550G (TYJ) (20)
- 22 SPRING ROLL PASTRY SHEETS 8\*8 (40S) (TAJ)
- 23 UTILITY LIGHTER WAVE 12S (CLIPPER)



## Noodles & Assorted

- 1 FRIED ONION 4X2.5KG (KTC)
- 2 GARLIC FLAKES 750G (6)
- 3 NOODLES HARI PLAIN 400G (24)
- 4 NOODLES QUICK COOK 30X500G (LONG LIFE)
- 5 NOODLES QUICK COOK 500G (LONG LIFE) (6)
- 6 POHA RED 35\*400G (RED AVAL)
- 7 POHA RED 36\*250G (RED AVAL)
- 8 POHA WHITE MED 1KG (AVAL)
- 9 POHA WHITE MEDIUM 25KG (AVAL)
- 10 SEMOLINA COARSE 25KG
- 11 SEMOLINA FINE 25KG
- 12 SEMOLINA FINE 5KG (TRS) (3)
- 13 SOOJI D/R RAVA 5KG (RUDRA)
- 14 SOOJI DOUBLE ROASTED RAVA 4\*5KG
- 15 SOOJI DOUBLE ROASTED RAVA 5KG (SINGLE PACK)
- 16 SOOJI IDLY RAVA 4\*5KG
- 17 SOYA CHUNKS 1KG
- 18 SOYA CHUNKS SMALL WHITE 30X200G
- 19 VERMICELLI 850G (MTR)



# Oil



- 1 BUTTER GHEE 2KG (HEERA) (6)
- 2 BUTTER GHEE 2KG (KHANUM) (6)
- 3 BUTTER GHEE CASE 4X2KG (KTC)
- 4 COCONUT OIL 6X1LTR (KTC)
- 5 GINGELLY OIL 1LTR (IDHAYAM) (10)
- 6 GROUNDNUT OIL 5LTR (3)
- 7 MUSTARD OIL BLEND 4LTR (KTC) (4)
- 8 MUSTARD OIL PURE 4LTR (TRS) (2)
- 9 OLIVE OIL 5LTR (KTC) (3)
- 10 RAPESEED OIL 20LTR BNB (KTC)
- 11 SUNFLOWER OIL 15LTR (KTC)
- 12 SUNFLOWER OIL 15LTR (PRIDE)
- 13 VEG GHEE TUB 12.5KG (TAJ)
- 14 VEG OIL 20LTR BNB (KTC)
- 15 VEG OIL 20LTR DRUM (KTC)



# Pickles & Papads



- 1 BUTTER CHILLI 100G (35)
- 2 BUTTER CHILLI 100G (50)
- 3 BUTTER CHILLI 100G (40)
- 4 LIME PICKLE 4.4KG (NATCO)
- 5 MADRAS PLAIN PAPADAM 60X200G
- 6 MADRAS PLAIN PAPADAM 60X200G (NATCO)
- 7 MANGO CHUTNEY 20KG
- 8 MANGO CHUTNEY 5KG (4)
- 9 MIXED PICKLE 4.4KG (NATCO)
- 10 VATHAL KOTHAVARANKAI 200G (RUDRA) (50)
- 11 VATHAL MANATHAKKALI 200G (25)
- 12 VATHAL PAWAKKAI 100G
- 13 VATHAL SUNDAKKAI 200G (25)





# Powders

- 1 BAKING POWDER 3KG (4)
- 2 CARDOMOM POWDER 50G (10)(NATCO)
- 3 CINNAMON POWDER 100G (20)
- 4 CORRIANDER POWDER 5KG
- 5 CUMIN POWDER 5KG
- 6 FENNEL POWDER 1KG
- 7 GARAM MASALA 5KG
- 8 GARLIC POWDER 1KG (6)
- 9 GINGER POWDER 1KG (6)
- 10 KASTURI CORRIANDER POWDER 2KG
- 11 MADRAS CURRY POWDER 5KG
- 12 PAPRIKA POWDER 5KG
- 13 PEPPER COARSE BLACK 1KG (NATCO) (6)
- 14 PEPPER POWDER BLACK 1KG (6)
- 15 PEPPER POWDER WHITE 1KG
- 16 TANDOORI MASALA 5KG
- 17 TURMERIC POWDER 5KG (3)



# Rices



- 1 BASMATI 1121 20KG (HEERA)
- 2 BASMATI 20KG (GRAND)
- 3 BASMATI 20KG (LAILA)
- 4 BASMATI 20KG (TILDA)
- 5 BASMATI BROKEN 20KG (TILDA)
- 6 BASMATI EX LONG 20KG (DAAWAT)
- 7 BASMATI EXTRA LONG 20KG (VEETEE MEGA)
- 8 GROUND RICE 1KG
- 9 IDLY RICE 10KG
- 10 IDLY RICE 10KG (RUDRA)
- 11 JEERAGA SAMBA RICE 10KG
- 12 MATTA RICE 10KG
- 13 MUTHU SAMBA RICE 4X5KG
- 14 MUTHU SAMBA RICE 5KG
- 15 PONNI BOILED 10KG (RUDRA)
- 16 PONNI BOILED 10KG (SHANKAR)
- 17 PONNI BOILED 20KG
- 18 PONNI RAW 10KG (SHANKAR)
- 19 SONAMASOORI 10KG (RUDRA)
- 20 WHITE RAW RICE 5KG



# Sakthi & Baba

- 1 BABAS CHILLI POWDER 1KG
- 2 BABAS FISH CURRY POWDER 1KG
- 3 BABAS KESARI MIX 40\*450G
- 4 BABAS MEAT MASALA 1KG
- 5 BABAS SAMBAR POWDER 250G
- 6 SAKTHI BIRYANI MASALA 30X200G
- 7 SAKTHI CHICKEN MASALA 30X200G
- 8 SAKTHI CHILLI CHICKEN 30X200G
- 9 SAKTHI CHILLI CHUTNEY POWDER 30X200G
- 10 SAKTHI CORRIANDER POWDER 30X200G
- 11 SAKTHI EGG CURRY MASALA 30\*200G
- 12 SAKTHI FISH CURRY MASALA 30X200G
- 13 SAKTHI MUTTON MASALA 30X200G
- 14 SAKTHI RASAM POWDER 30X200G
- 15 SAKTHI SAMBAR POWDER 30X200G
- 16 SAKTHI TAMARIND POWDER 26X200G



## Sauces

- 1 CHILLI SAUCE 6X340G (MAGGI)
- 2 CHILLI SAUCE EX HOT 6X320G (MAGGI)
- 3 CHILLI SAUCE HOT 6X455ML (SRIRACHA)
- 4 CHILLI SAUCE HOT 6X730ML (SRIRACHA)
- 5 GREEN CHILLI SAUCE 400G (MD)
- 6 GREEN CHILLI SAUCE 6X265G
- 7 HOT CHILLI SAUCE 2\*2.3 KG
- 8 HOT SAUCE 12\*355ML (CRYSTAL)
- 9 HOT SAUCE 12\*474ML (CRYSTAL)
- 10 MINT SAUCE 2\*2.3KG (KTC)
- 11 SOY SAUCE DARK 12X500ML
- 12 SOY SAUCE LIGHT 12X500ML
- 13 SOY SAUCE LIGHT 12X500ML (PEARL RIVER)
- 14 TAMARIND SAUCE 10\*1LTR
- 15 TAMARIND SAUCE 6X425G (MAGGI)
- 16 THAI SWEET CHILLI SAUCE 10X1LTR (HEERA)
- 17 THAI SWEET CHILLI SAUCE 12X700ML





## Seasoning

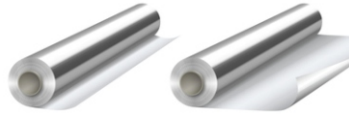
- 1 AJINOMOTO 1KG (MSG)
- 2 ALL PURPOSE AROMA 1KG (JUMBO)
- 3 BAY LEAVES 15\*30G (TRS)
- 4 BLACK SALT OR KALA NIMAK 400G (10)
- 5 CHICKEN STOCK POWDER 1KG (JUMBO)
- 6 CITRIC ACID 1KG
- 7 DAGAD PHOOL - KALPASI 100G
- 8 DAGAD PHOOL - KALPASI 1KG
- 9 ENO FRUIT SALTS 6\*150G
- 10 GINGER & GARLIC PASTE 6\*1KG
- 11 KASOORI METHI 1KG (6) (A1)
- 12 LEMON DRESSING 24\*400ML
- 13 LEMON JUICE 12\*500ML (PRIDE)
- 14 LEMON JUICE 12X500ML
- 15 LG CAKE 100G (10)
- 16 LG POWDER 100G (10)
- 17 LIQUID SEASONING HOT 12X100ML (MAGGI)
- 18 MARATHI MOGGU 1KG
- 19 PINEAPPLE ESSENCE 12X28ML (TRS)
- 20 SALT 12.5KG
- 21 TAMARIND CONCENTRATE / PASTE 12X200G
- 22 TAMARIND CONCENTRATE 6X400G (TRS)
- 23 TAMARIND SEEDLESS 50\*200G
- 24 TAMARIND SEEDLESS 50\*200G (SHANKAR)
- 25 VANILLA ESSENCE 12X28ML (TRS)
- 26 VINEGAR WHITE 5LTR (4)



## Seeds

- 1 AJWAIN 1KG
- 2 AJWAIN SEEDS 25KG
- 3 CARDOMOM BLACK 700G (10)
- 4 CARDOMOM GREEN 500G
- 5 CINNAMON CASSIA 1KG
- 6 CINNAMON CEYLON 50G
- 7 CLOVES WHOLE 1KG
- 8 CLOVES WHOLE 700G
- 9 CORRIANDER SEEDS 15KG
- 10 CORRIANDER SEEDS 1KG
- 11 CUMIN SEEDS 1KG
- 12 CUMIN SEEDS 25KG
- 13 CUMIN SEEDS BLACK OR KALA JEERA 250G (10)
- 14 FENNEL SEEDS 1KG
- 15 FENNEL SEEDS 25KG
- 16 FENUGREEK SEEDS 1KG
- 17 FENUGREEK SEEDS 25KG
- 18 MELON SEEDS OR CHAR MAGAZ 1KG
- 19 MUSTARD SEEDS 1KG
- 20 MUSTARD SEEDS 25KG
- 21 NIGELLA OR KALONJI 1KG (TRS) (6)
- 22 NIGELLA OR KALONJI SEEDS 1KG (IND)
- 23 NUTMEG WHOLE 250G
- 24 NUTMEG WHOLE 400G
- 25 PANCH PUREN 1KG (6)
- 26 PEPPER WHOLE 1KG
- 27 PEPPER WHOLE 25KG
- 28 POPPY SEEDS 1KG (KASA KASA) (6)
- 29 POPPY SEEDS 25KG (KASA KASA)
- 30 SAGO SEEDS MED 1KG
- 31 SAGO SEEDS MED 20KG (RUDRA)
- 32 SAGO SEEDS MED 25KG
- 33 SAGO SEEDS SMALL 1KG
- 34 SAGO SEEDS SMALL 20KG (RUDRA)
- 35 SAGO SEEDS SMALL 25KG
- 36 SESAME SEEDS BLACK 400G
- 37 SESAME SEEDS HULLED 1KG (5)
- 38 SESAME SEEDS HULLED 22.68KG
- 39 SESAME SEEDS HULLED 25KG
- 40 SESAME SEEDS NATURAL 25KG
- 41 STAR ANISEEDS 1KG
- 42 TUKMARIA OR BASIL SEEDS 1KG
- 43 TUKMARIA OR BASIL SEEDS 300G (10)





# Take Away

- 1 CARRIER BAGS JUMBO BLUE (12\*18\*24) 1000
- 2 CARRIER BAGS S2 WHITE (8\*13\*18) (2000)
- 3 CARRIER BAGS S4 WHITE (11\*17\*21) 1000
- 4 CLING FILM EXTRA WIDE SINGLE (45CM\*30CM) (6)
- 5 CUPS 100\*10OZ (5\*20) (DART)
- 6 CUPS 100\*8OZ (5\*20) (DART)
- 7 FOIL CONTAINERS NO 1 (1000)
- 8 FOIL CONTAINERS NO 2A (1000)
- 9 FOIL CONTAINERS NO 6 (500)
- 10 FOIL LINED PAPER BAGS 7\*9\*12 (450)
- 11 FORK PP 10\*100
- 12 GREASEPROOF BAGS 10\*10 (1000)
- 13 HEAVY LIDS NO 1 (1000)
- 14 HEAVY LIDS NO 2A (1000)
- 15 HEAVY LIDS NO 6 (500)
- 16 KITCHEN FOIL SINGLE (75M\*450MM) (6)
- 17 KNIFE PLASTIC 10\*100
- 18 KRAFT BROWN BAG STR 10\*10 (1000) (MEDIUM)
- 19 KRAFT BROWN BAG STR 12\*12.5 (500) (LARGE)
- 20 KRAFT BROWN BAG STR 7\*7 (1000) (VERY SMALL)
- 21 KRAFT BROWN BAG STR 8.5\*8.5 (1000) (SMALL)
- 22 LIDS STRAW SLOTS 100\*8OZ (DART)
- 23 LIDS VENTED 100\*10OZ (DART)
- 24 PLASTIC CONTAINERS + LIDS 1000 SATCO (250)
- 25 PLASTIC CONTAINERS + LIDS 750 SATCO (250)
- 26 PLASTIC CONTAINERS + LIDS C500 SATCO (250)
- 27 PLASTIC CONTAINERS + LIDS C650 SATCO (250)
- 28 PLASTIC CONTAINERS + LIDS T1100 SATCO (150)
- 29 PLASTIC CONTAINERS WITH LIDS C500 (KTC) (250)
- 30 PLASTIC CONTAINERS WITH LIDS C500 (PEEPAL) (250)

- 31 PLASTIC CONTAINERS WITH LIDS C650 (KTC) (250)
- 32 PLASTIC CONTAINERS WITH LIDS C650 (PEEPAL) (250)
- 33 PLATES FOAM RW 25CM (50)
- 34 PLATES PAPER 23CM RW HD (20\*50)
- 35 SAUCE CUPS + LIDS 10OZ MAJESTIC
- 36 SAUCE CUPS + LIDS 12OZ SATCO (150)
- 37 SAUCE CUPS + LIDS 1OZ MAJESTIC (1000)
- 38 SAUCE CUPS + LIDS 2OZ SATCO (1000)
- 39 SAUCE CUPS + LIDS 4OZ SATCO (1000)
- 40 SAUCE CUPS + LIDS 8OZ SATCO (225)
- 41 SERVIETTES 2PLY WHITE (40CM\*125\*16) (POPPIES)
- 42 SERVIETTES SINGLE PLY WHITE 500
- 43 SOS BAG BROWN FH LARGE 10\*15.5\*12 (250)
- 44 SOS BAG BROWN FH MEDIUM 8.5\*13\*10 (250)
- 45 SOS PLASTIC WHITE CARRIER LARGE (250)
- 46 SOS PLASTIC WHITE CARRIER MEDIUM (250)
- 47 SPOON 10\*100
- 48 SPOON CLEAR 50S (20) (RM)
- 49 SULPHITE BAGS WHITE 10\*10 (1000)
- 50 SULPHITE BAGS WHITE 8.5\*8.5 (1000)

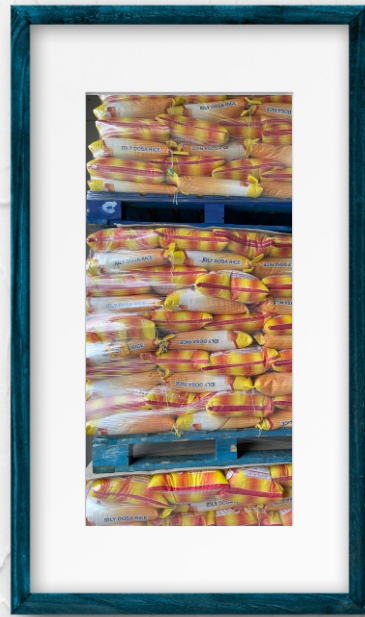
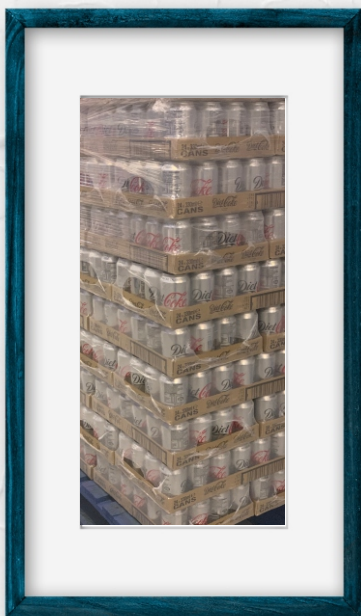


# Tin Foods

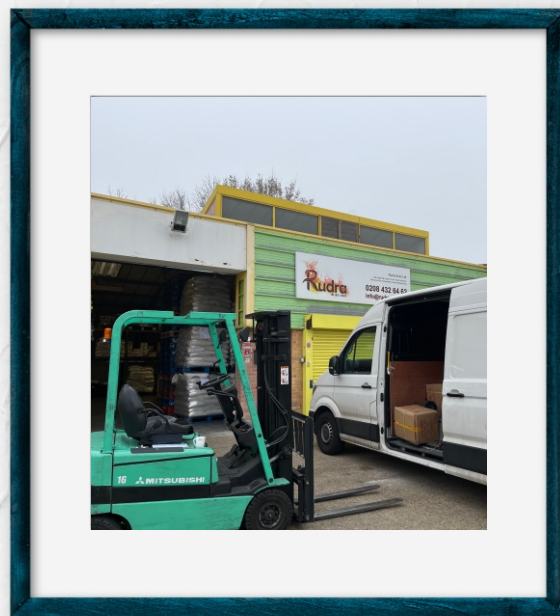
- 1 BLACK EYE BEANS 12X400 (KTC)
- 2 BOILED CHICK PEAS LARGE 6X2550G
- 3 BOILED CHICK PEAS SMALL 12X400G
- 4 CHOPPED TOMATOES LARGE 6X2550G
- 5 COCONUT MILK TIN 12X400ML (KTC)
- 6 CREAM STYLE CORN 12\*404G (STOKELYS)
- 7 PLUM TOMATOES 6X2550G
- 8 SWEET CORN ORIGINAL 12\*198G (GREEN GIANT)
- 9 SWEET CORN ORIGINAL 24\*198G (GREEN GIANT)
- 10 TIN FISH IN BRINE CHILE 24X425G (JURA)
- 11 TOMATO KETCHUP 2X4.5KG
- 12 TOMATO KETCHUP 2X4LTR (HEERA)
- 13 TOMATO KETCHUP 2X4LTR (PRIDE)
- 14 TOMATO PASTE LARGE 4X4.5KG
- 15 TOMATO PASTE MED 12X800G



# Photo Gallery



# Photo Gallery



# OUR BRANDS



Scan me to Locate Rudra Exim:


**FREE DELIVERY**

within **M25** and Credit Terms may apply



**Rudra Exim Ltd**  
Wholesale Distributors

3 Wollaston Crescent, Burnt Mills, Basildon, SS13 1QD  
 +44 (0) 208 432 6462  
 info@rudrauk.co.uk  
 www.rudrauk.co.uk